

## CLEAR POLYURETHANE

### Dependability and Durability

- ❖ Enhances natural wood with a warm satin sheen
- ❖ Greater depth of color over other finishes
- ❖ Protects against marring
- ❖ Helps resist water and alcohol
- ❖ Safe, non-toxic and easy-to-use
- ❖ Seals & protects with one coat

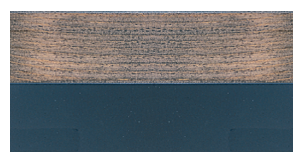
## CHANGE BORING TO EXCITING WITH OUR PAINT/STAIN COLORS



FARMHOUSE RED LM13



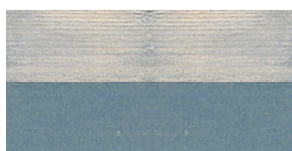
HUNTER GREEN LM11



THUNDER BLUE LM10



BLACK ONYX LM30



WILLIAMSBURG BLUE LM15



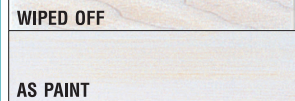
HERITAGE GREEN LM16

## GEL WIPE-ON FINISHES A "DO-IT-YOURSELFERS" DREAM

LAWRENCE-McFADDEN Gel Wipe-On Finishes are a "do-it-yourselfers" dream. These stains, paint/stains and clear coat polyurethanes are a gel, not a liquid. They are easy to apply and produce a finish of beautiful consistency. Simply wipe them on with a cloth, foam, or paint brush, in half the time it takes with other finishing products. You need not worry about spilling, splashing, overlapping or running, and your results will have the beauty of a professional finish. The wipe-on applications of LAWRENCE-McFADDEN products provide the control of tones and depth of lustre that are the hallmark of the professional.

All our finishing products are intermixable, so you can match existing colors as closely as possible, or create a finish exclusively yours. All our products are non-toxic (after proper drying) polyurethane based, making them resistant to marring, alcohol and water. They dry in a few hours, allowing you to complete your finishing project in hours, not days. They have an indefinite shelf life and can be stored and used on future pieces or wood trim. Our clear coat finish is non-toxic and can be applied on household eating utensils.

If you want a tough, close to the wood finish, with goof-proof application, use LAWRENCE-McFADDEN finishing products.



BLEACHED WHITE LM41

To achieve the bleached wood finish as shown here follow Steps 1 and 2 (last page) of this brochure. After applying the first coat of stain and allowing the proper drying time, simply add another coat of stain. Sand the unit after the second coat has dried with a 320 sandpaper and wipe off the dust. This completes the finish.

Alternative: (1) LAWRENCE-McFADDEN'S Clear Coat Polyurethane can be applied to the Bleached Wood finish but will cause an ambering tone. (2) You can achieve a white painted look by applying multiple coats of the stain.

### STEP 1 — SANDING

The most IMPORTANT step in finishing furniture is sanding and surface preparation. It can affect the overall results in several ways. Sanding with the right sandpaper will assure a more even depth of shade. Even if factory pre-sanding has been completed, all surfaces must be sanded with 180 garnet sandpaper before staining can take place. The rougher the surfaces are before staining, will produce a considerably darker finish. The smoother the surfaces are sanded, the more professional will be the result. Always sand with the grain, being extra careful with mouldings, turnings and end grains. Next thoroughly wipe off all sanding dust and residue with a tack cloth or a cloth dampened with mineral spirits.

### MAKE A TEST SAMPLE

### STEP 2 — STAINING

LAWRENCE-McFADDEN Stains are real work savers. This one product stains, seals, and protects wood in a single easy application. Before staining, TEST

COLOR on an unexposed area (example — back of a drawer) to be sure it is the desired depth and shade. Begin staining by applying the stain generously in a circular motion with a clean, lint free cloth or foam brush. Apply stain only in sections at a time. Do not apply stain to the entire top of a large table or to the entire side of a bookcase unit. The stain may begin to tack up and make it difficult to wipe off the residue. Remove excess with the grain using a clean area of the cloth. For hard to stain areas use a small foam brush

just as you would to apply any liquid stain. If too dark, simply dampen a cloth with mineral spirits and rub off stain until desired color is achieved. For a darker color, apply additional coat of stain. Allow a minimum of 4 hours drying time before applying additional coats of stain or clear polyurethane finishes. For best results allow overnight drying between coats. If weather conditions are humid, drying times will be affected. Darker, heavily pigmented colors may take up to 72 hours to dry before clear coats are applied. Some lifting of color may occur when applying clear coats. At this point you have a durable and complete finish and could stop here.

### HELPFUL HINTS!

(1) Mix 1½ ounces of mineral spirits to ½ ounce of LAWRENCE-McFADDEN'S wipe-on clear polyurethane. With a 1" foam brush apply this mixture to the end grain areas immediately before applying the colored stain. This prevents the stain from being absorbed too quickly into the end grains.

(2) When applying LAWRENCE-McFADDEN Paint/Stain colors, a painted look results when several coats of the base stain are applied. One coat of the paint/stain color wiped off will allow the wood grain to show through and will appear as if the unit being finished was dyed. See the color sample chart.

### STEP 3 — CLEAR POLYURETHANE

Application of clear polyurethane is recommended over the stain to provide additional protection against marring, and added resistance to moisture and alcohol. To apply the clear

coat, follow the same procedure you used in applying the stain, but with one exception. In removing the excess clear coat, be sure you form a smooth pad surface with your cloth. Keep turning the cloth, always making sure it is smooth. If heavy streaks appear, either too much clear coat has been left on the surface, or your cloth surface is not smooth. Correct this by using a smoother cloth surface and stroke lightly in the direction of the grain to even out the surface. If using a foam brush, apply the clear coat as you would a paint. Be careful not to apply heavily and level out any residue with the direction of the grain. Allow a minimum of 4 hours before applying additional coats. For best results allow clear coat to dry overnight between coats. We do recommend 2 coats of clear polyurethane be applied to all furniture with light scuff sanding (see STEP 4) between coats. The more coats applied, the higher the final gloss and added protection.

### STEP 4 — CLEAR COAT SANDING

Each clear coat should be thoroughly dry and scuff sanded with 320 sandpaper before applying the next coat. For flat surfaces, use a very fine sandpaper, sanding with the grain. For mouldings, turnings, drawer fronts, and sharp edges, use "Scotch-Bright" (available at paint stores) sanding pads or 4/0 steel wool. Clean surfaces with a tack cloth or mineral spirits dampened cloth. Repeat process after each coat until desired gloss is achieved. LAWRENCE-McFADDEN'S clear coat polyurethane is a satin gloss finish and will not develop a 100% high gloss finish even after repeated coats.